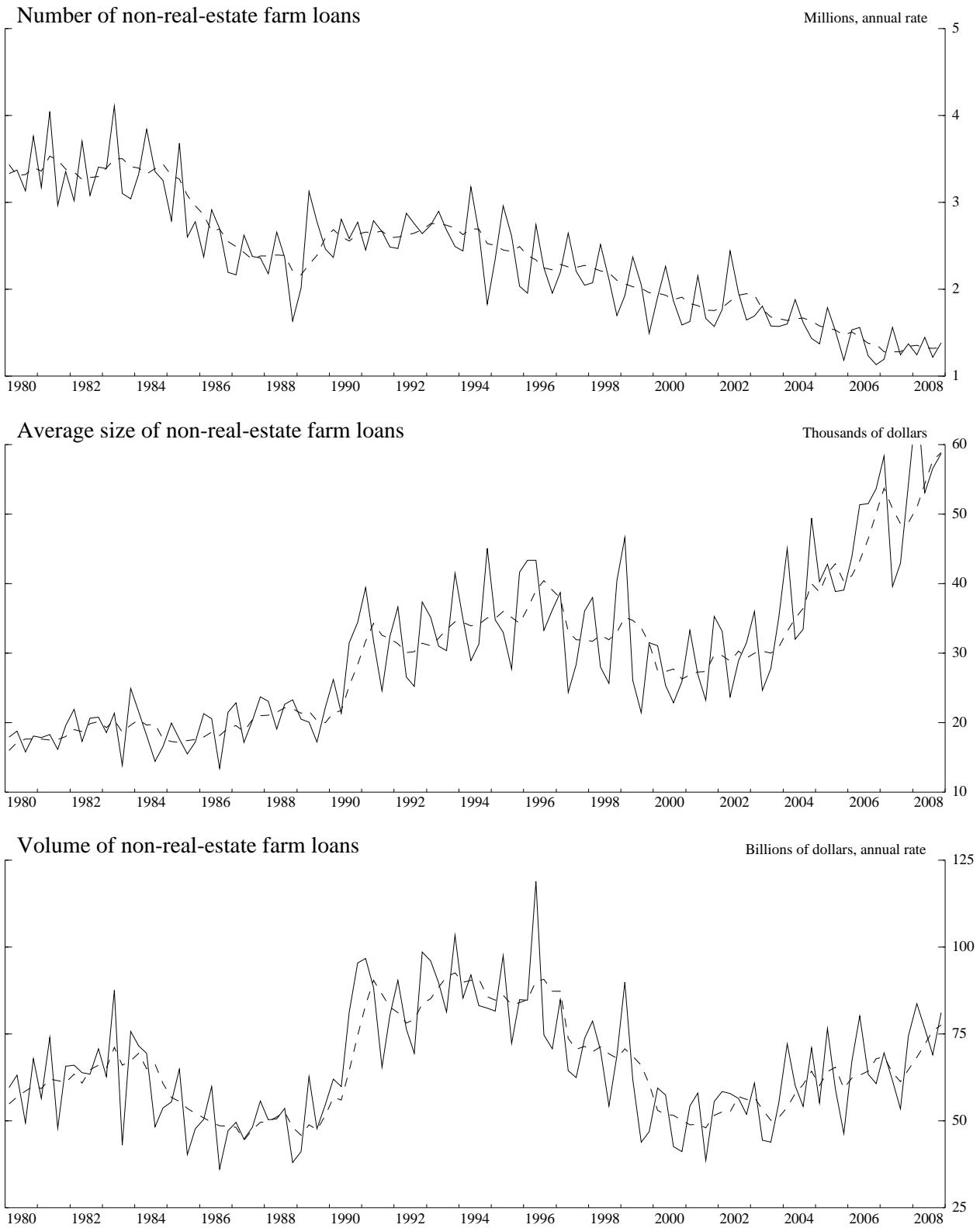


Chart 1

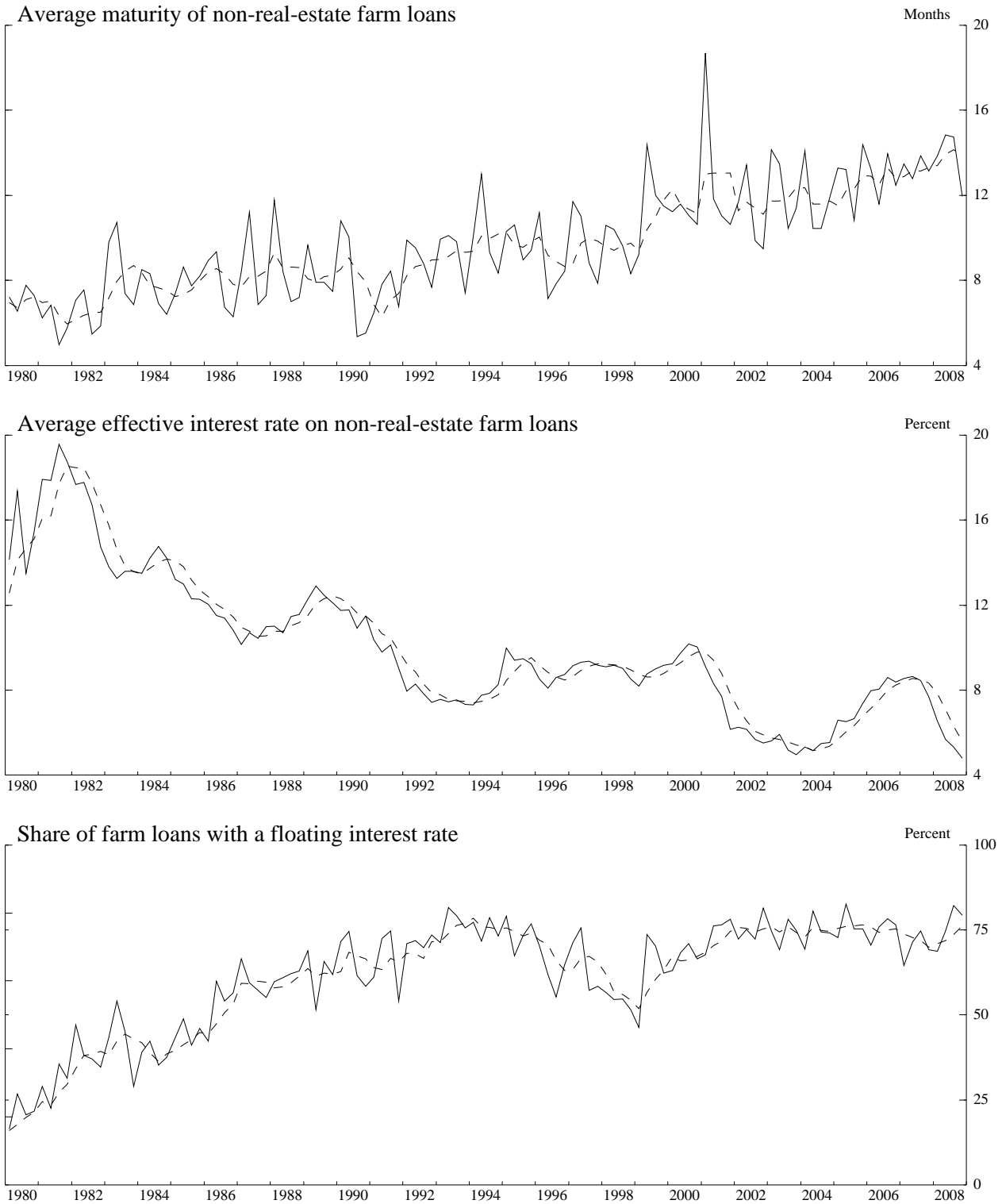
Number, Size, and Volume of Non-real-estate Farm Loans, 1980-2008



-- Four-quarter moving average.
Source. Survey of Terms of Bank Lending to Farmers.

Chart 2

Maturity and Interest Rate of Non-real-estate Farm Loans, 1980-2008



Note. Effective (compounded) annual interest rates are calculated from the stated rate and other terms of the loans and weighted by loan size.

-- Four-quarter moving average.

Source. Survey of Terms of Bank Lending to Farmers.